



VISHRAAM
— we build smiles —

VISHRAAM
Lime *lite*
The fine art of Happiness

A Mark of Excellence

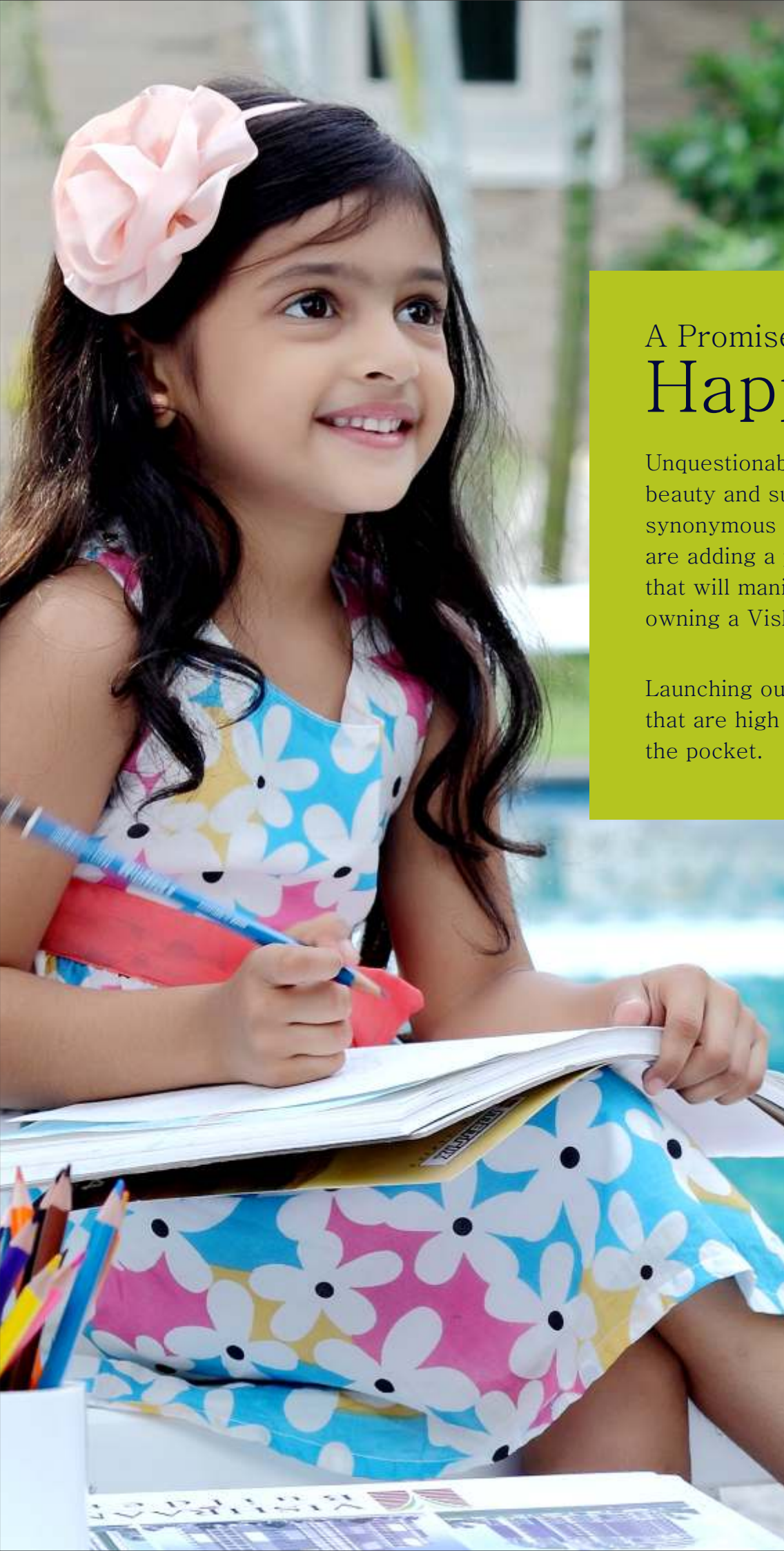
Quality homes, immaculate design and over 22 years of experience is what Vishraam brings to the table. It is our firm belief that a home should be a reflection of your happy soul and it is this belief that we pour into every home.



A Promise of Happiness

Unquestionable quality, aesthetic beauty and sustainability have been synonymous with Vishraam. And we are adding a promise of affordability that will manifold the happiness of owning a Vishraam home.

Launching our Lite Series- Homes that are high on lifestyle, but lite on the pocket.



Welcome to
Vishraam Limelite,
an urban retreat where
each element has been
hand-picked, just for your
happiness.





Vishraam Limelite is envisioned in a way where nature's boundless beauty meets luxury lifestyle. Be it walking on the manicured lawns of the Zen Garden or entertaining yourself in the Open Party area on the Terrace, it's everything you have always dreamt of.

Discover a home where modern architecture merges seamlessly with the natural landscape, giving luxury a whole new meaning.





HAPPINESS

INSIDE OUT

Your new home at Vishraam Limelite comes with a space which engulfs you with happiness. Soaking everyone's body, mind and soul with bliss, your home lets you keep your worries at bay. Every home has a fine blend of bold lines and minimalistic outlook.

Thoughtfully planned to use natural light & ventilation, sustainable practices here have reached a new epitome of excellence.





Comfort, rest, or play, why pick?
With our spacious bedrooms at Vishraam Limelite, there's room for everything.

MAKE WELLNESS
A RITUAL

Staying fit is one of the primary requisites of today's busy life. At Vishraam Limelite meeting your fitness goals will be super easy.





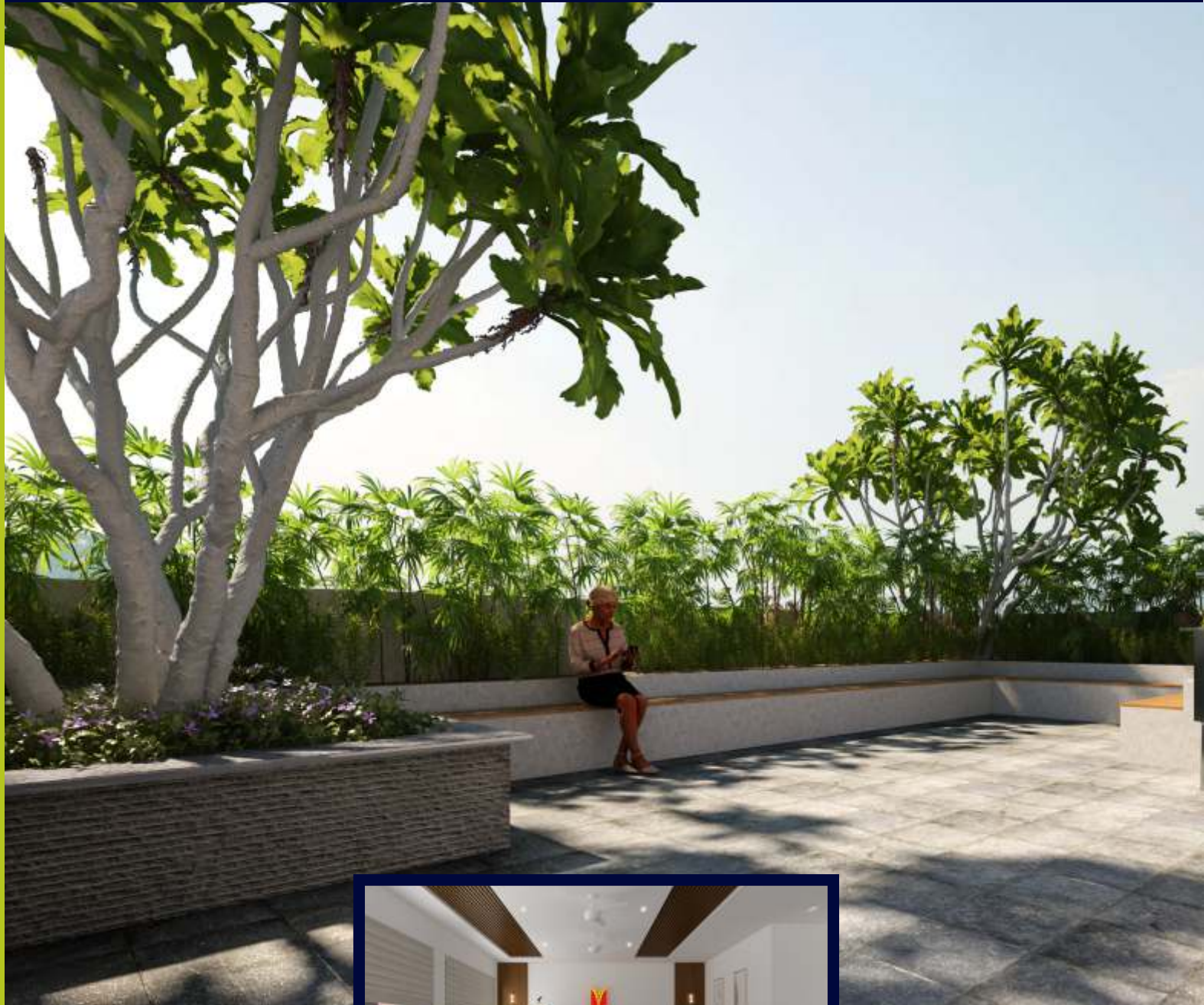
SOOTHE YOUR SOUL

Play the perfect trick to soothe your soul that has always sought purity and freshness in the air.

Zen Garden on the First Floor | Garden Area with Medicinal Plants
| Pebble Walk with Sundeck

A SOCIAL
ECOSYSTEM

Vishraam Limelite creates the perfect ecosystem for its elite residents to meet, socialize, and bond with each other.











GET PLAYFUL

Get going to enjoy playful times at Vishraam Limelite. An exclusive indoor gaming zone will keep you happily busy, while the tiny tots enjoy their time out at the Childrens' Play area.

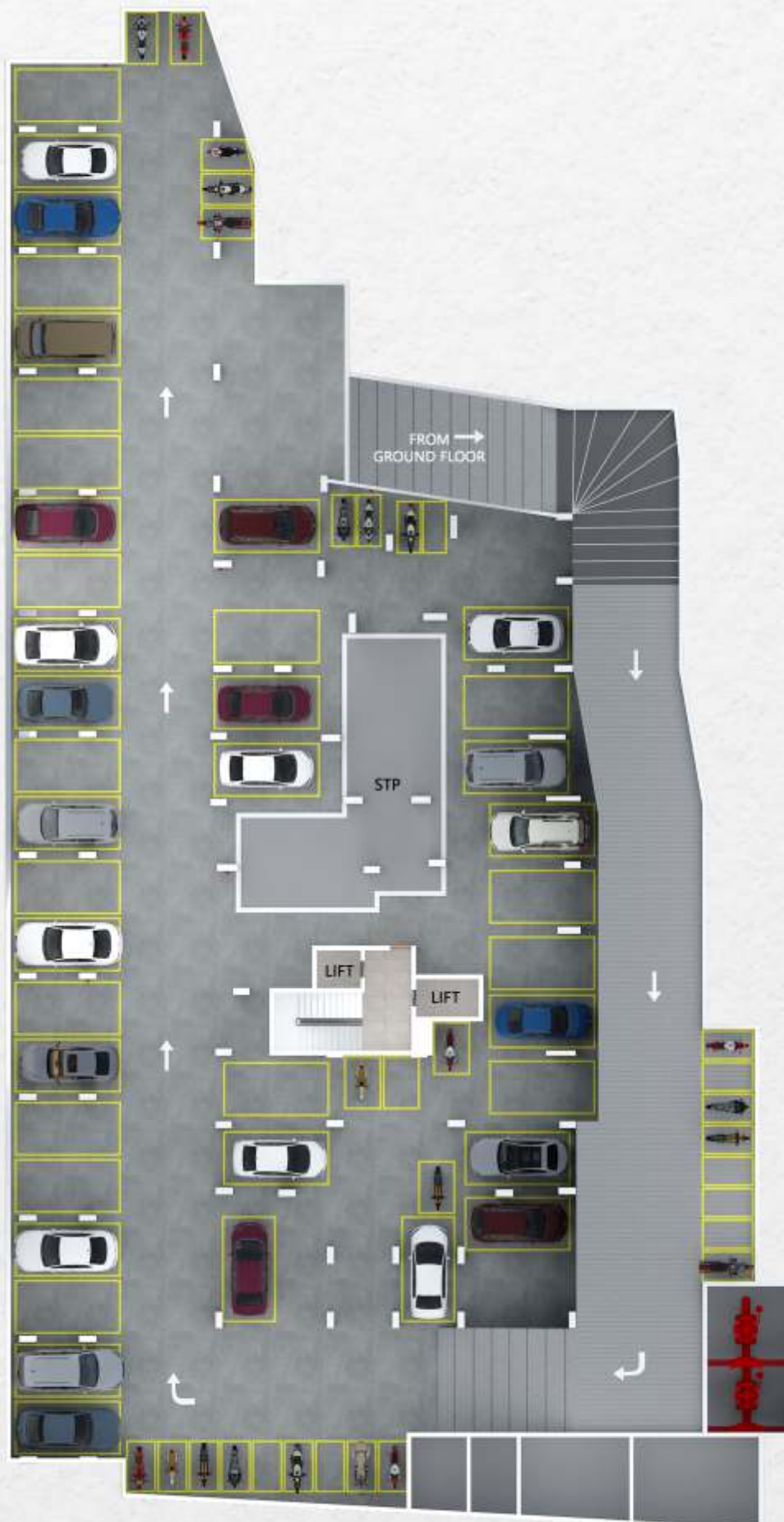
Indoor games | Childrens' Play area



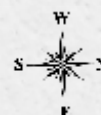
-  Chinmaya Vidhyalaya, Devamatha School
Government engineering College & Vimala College
in close proximity
-  Siva Temple & Viyyur Church within 2 kms
-  Daya Hospital & Aswini Hospital within the vicinity
-  4 kms from Thrissur Round
-  Just 20 mins drive to Thrissur Railway station
& Thrissur Bus Terminus
-  In close proximity to Supermarkets,
Banks ATM, Pharmacy and Bus Stop

The apartments at Vishraam Limelite are beautifully tucked away from the madness of the city. Yet, they are close to every need you wish attended to. Strategically located on Thrissur - Shornur Road.

Vishraam Limelite gives you immediate access to the best Thrissur has to offer. From the best options in retail and commercial developments to schools, a bustling office hub, hospitals, colleges and world class recreational options.



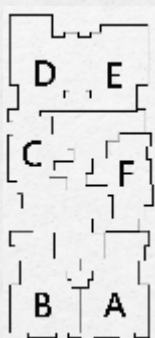
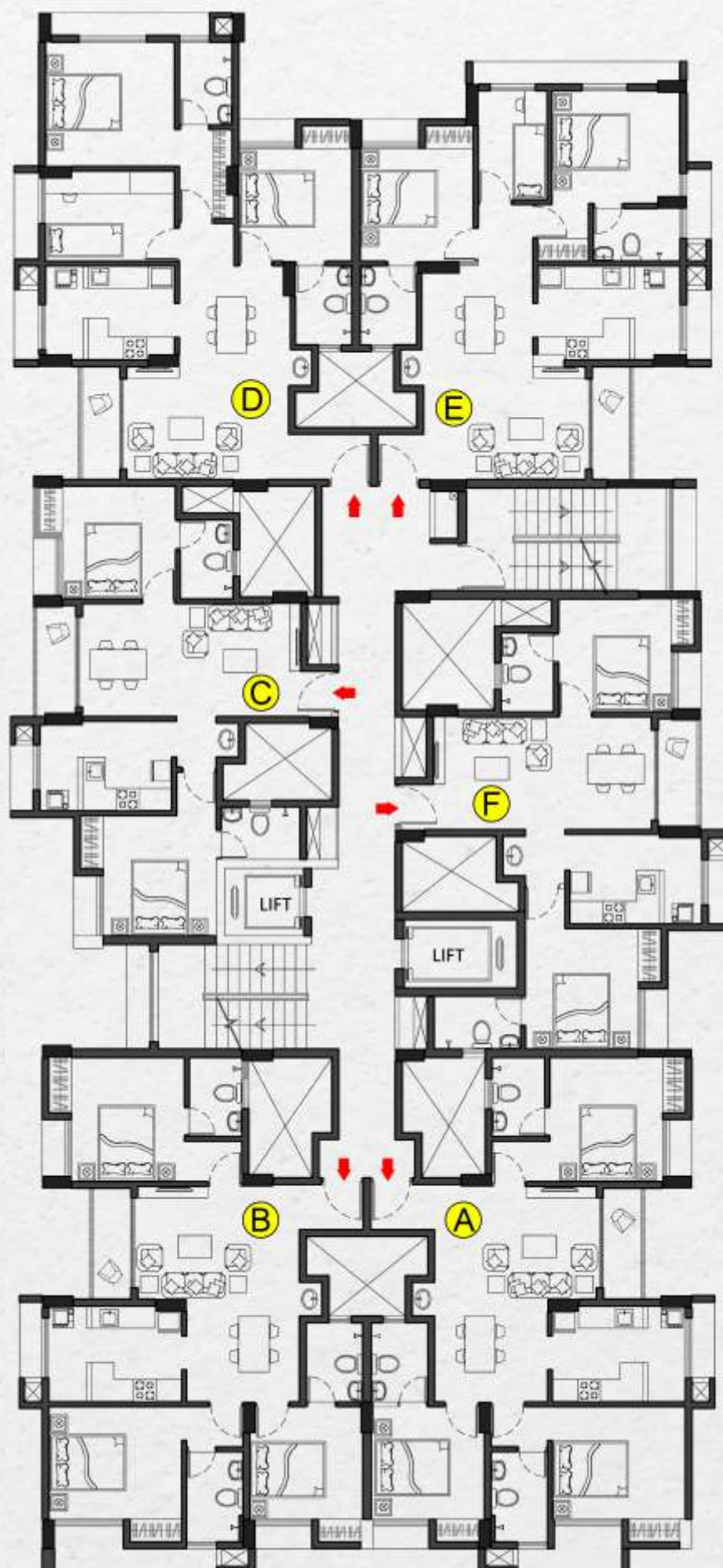
Basement Floor Plan



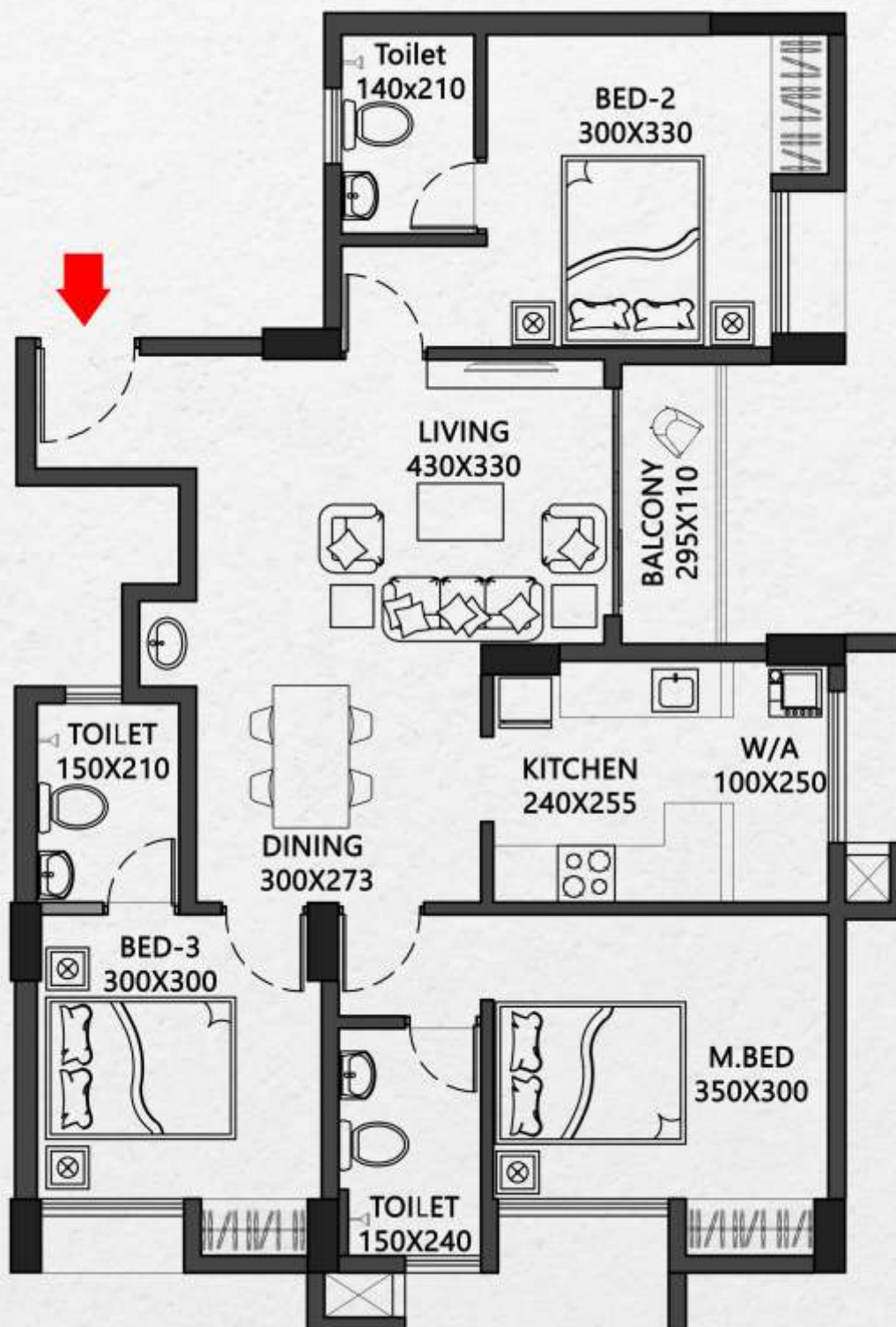


Ground Floor Plan





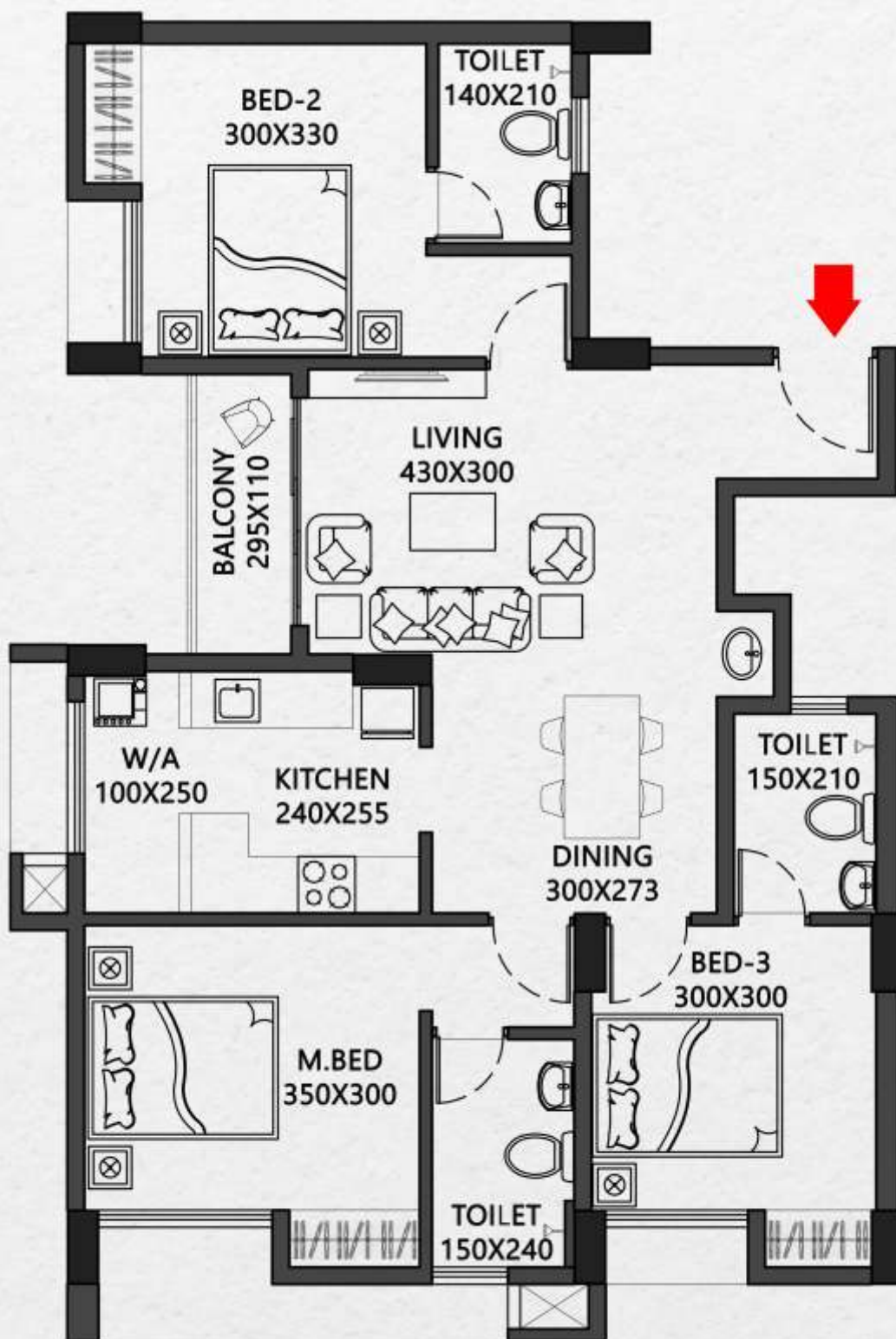
Typical Floor Plan (1st to 13th Floor)



Area - 1232 sq.ft	
Carpet Area	840 sq.ft
Balcony Area	35 sq.ft

Flat A (1st to 13th Floor)

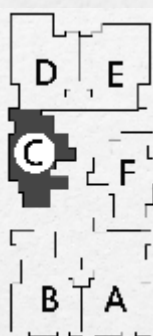




Area - 1232 sq.ft	
Carpet Area	840 sq.ft
Balcony Area	35 sq.ft



Flat B (1st to 13th Floor)

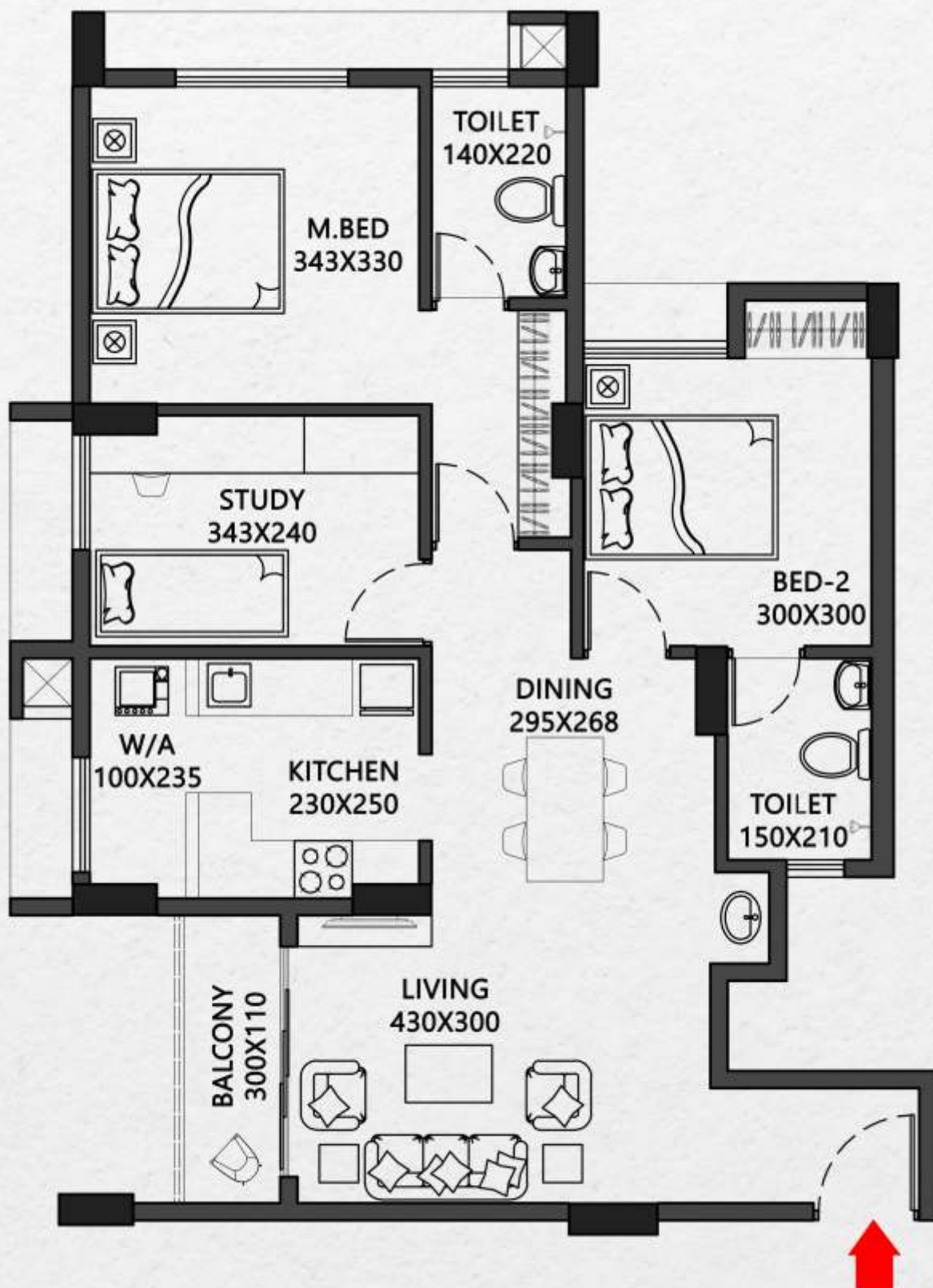


Area - 912 sq.ft

Carpet Area	607 sq.ft
Balcony Area	36 sq.ft

Flat C (1st to 14th Floor)

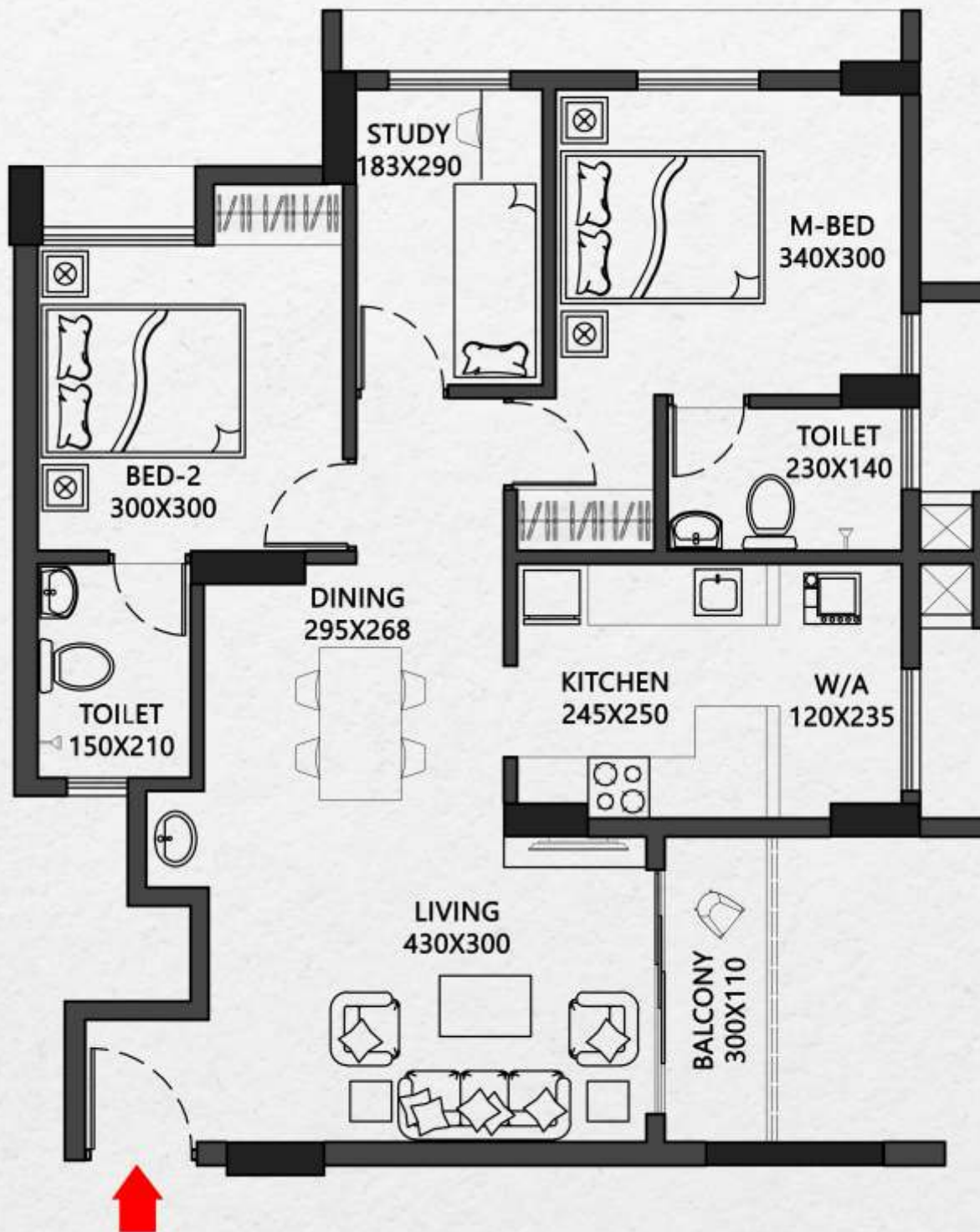




Area - 1154 sq.ft	
Carpet Area	789 sq.ft
Balcony Area	36 sq.ft



Flat D (1st to 14th Floor)



Area - 1082 sq.ft	
Carpet Area	736 sq.ft
Balcony Area	36 sq.ft

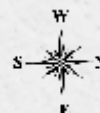
Flat E (1st to 14th Floor)

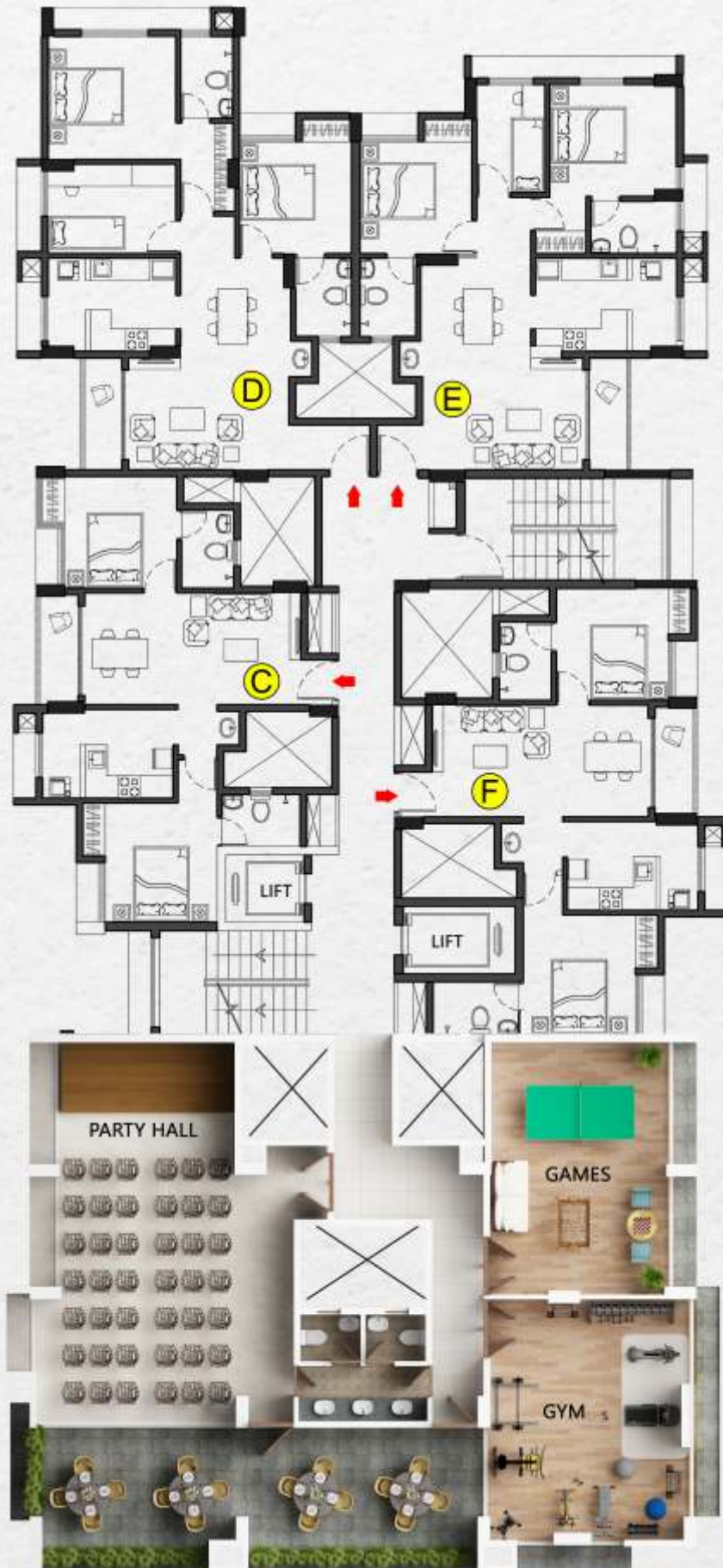




Area - 922 sq.ft	
Carpets Area	611 sq.ft
Balcony Area	35 sq.ft

Flat F (1st to 14th Floor)





14th Floor Plan





Terrace Floor Plan



SPECIFICATION



Foundation

R.C.C Isolated Footings as per the soil strata and design



Structure

R.C.C framed Structure, Solid Block masonry and with cement Plaster



Internal Wall & Ceiling

- **Ceiling** finish with two coat Cement based putty, one coat primer and two coat distemper with roller **finish**
- Internal wall finish with two coat Cement based putty, one coat primer and two coat distemper with roller **finish**



Doors

- **Main door:** Ready made- Door jambs & Both side laminated pre hung flush door shutter, including all necessary fittings
- **Bed room door:** Ready made door- Wpc frame with skin shutter, including all necessary fittings
- **Toilet door:** Ready made door - With Wpc frames and good quality door shutters, including all necessary fittings



Windows

- **Windows with sliding & openable type ,Sliding doors, ventilators** of aluminium powder coated sections/Upvc sections



Flooring

- Entrance, Living, Dining, Bed rooms, Kitchen, W.A, etc: - Flooring & skirting with 60X60 cm vitrified tiles -9 mm thickness
- **Toilet:** Ceramic antiskid Floor tiles 60X60cm for toilet floor & glazed tile 30X45 cm dadoing upto a height of 7 feet.
- **Kitchen counter slab:** Kitchen counter frame with GP coated rectangular tube section and jet black granite slab, top & bottom with chamfering edges. & glazed tile dado upto 60 cm height.
- **Balcony, Garden:** Rustic floor tiles 30X30/or 45X45 CM



Electrical

- Modular Switches & Sockets providing as per drawing
- Concealed wiring with FRLS cables

SPECIFICATION



Plumbing & Sanitary

- **M.Toilet** : Floor mount EWC-, with cistern/ flush tank, half pedestal wash basin- and CP items-2 in 1 wall mixer, Over head shower rose with arm. Pillar cock, angle cock, health faucet etc.
- **Bed 2 & Bed 3 Toilet** : Floormount EWC-, half pedestal wash basin-, and CP items - 2 in 1 wall mixer ,Over head shower rose with arm, Pillar cock,angle cocks and health faucet etc.
- **Dining** : Wash basin with Half pedestal, Pillar cock, and glazed tile dado upto 60 cm
- **Kitchen**: Single bowl without drain board steel sink .Sink cock swanneck pillar cock/with long body



Source of Water supply

- Bore well/ Open well source, through sump and pumping to Over head tank and distribution from OHT



False ceiling

- **Toilets**: False ceiling with powder coated GI frames with PVC grid tile sheet 60x60 cm size



Handrails

- **Hand rails** : GP coated hand rails for Staircase and Balconies with 16 gauge sections with enamel painted



External Finish

- **External** wall finish with one coat primer, two coat Weathershield Emulsion paints



Lifts

- 1 Nos of 8 Passengers lifts and 1 No Fire lift-stretcher lift (13 passengers)



Fourteenth floor

- Recreation Hall
- Gym
- Indoor play area
- Open recreation area

SPECIFICATION



Terrace floor

- Bio-Bin waste management system
- Incinator
- Yoga/meditation area
- Solar to Power grid



Ground floor

- Landscaped Garden
- Childrens play area
- Reticulated gas system
- STP
- Rain water harvesting



First Floor

- Zen Garden
- Pebble walk with Sundeck



General

- Intercom
- Controlled Access Entry
- CCTV at Vantage points.

RERA NO: K-RERA/PRJ/TSR/183/2022



VISHRAAM
— we build smiles —

Near Punkunnam Junction, Thrissur, Kerala - 680 002.

Mob: +91 75919 75919

E-mail: mail@vishraam.com | www.vishraam.com

